



Softub®

Softub® Canada
softubcanada.com

6 GREAT REASONS TO OWN A SOFTUB SPA

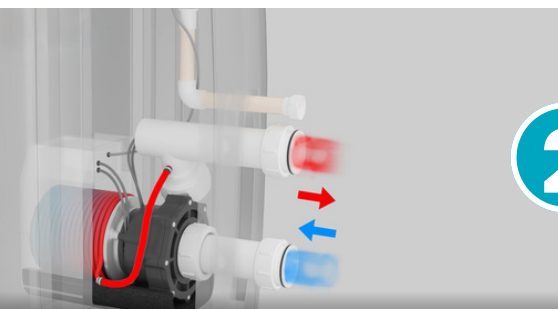


1

PORTABLE



Our largest Softub spa only weighs 88 lbs. It is so light it can easily be rolled into place by one person. Softub has taken easy installation to a new level, making it the most portable, full-featured spa in the world. You are never limited to one location. Moving? Take it with you. Houseboat? No problem. Installation is so easy and NO tools are required! Softub spas are perfect for outdoor and indoor use and roll through any standard doorway or gate.



2

HEATS WITHOUT A HEATER



The Softub hot tub was developed with our patented Heat Recovery Technology which incorporates the pump motor and heating unit into our single HydroMate® system. It plugs into a standard dedicated 15 amp/115 volt outlet, keeping energy costs as low as \$15-\$20 a month.



3

APPEARANCE



Softub spas come in six designer exterior colors that enhance any decor. Each spa is meticulously hand-crafted and undergoes rigorous testing to meet the highest standards. Beyond their beauty, Softub spas are built to last, offering both style and durability.

DESIGNED TO WITHSTAND ALL ENVIRONMENTS



Softub spas are designed for outdoor living; made from top quality marine-grade vinyl to ensure many years of enjoyment. Rain, snow or sunshine, the Softub spa will withstand any Canadian weather thrown its way. It's portable and easy to setup so you can enjoy your Softub indoors too!

EVERYTHING IS INCLUDED



With your purchase, you get the Softub spa, HydroMate® PowerPak™, High Density Insulated Cover, Security Locking Straps and a five-year limited warranty (the best in the industry).

COMFORTABLE



Softub spas are constructed for unsurpassed comfort. The soft, yet incredibly durable design of the Polybond™ interior provides comfort for any position. With our open design, there is no assigned seating, hard or slippery surfaces or hidden depths. Softub spas provide the perfect hydrotherapy environment allowing freedom of movement.

4



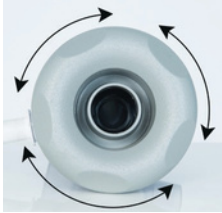
5



6



MEET THE PORTICO SOFTUB FLAGSHIP MODEL!



SEE WHAT MAKES THE POSEIDON JET™ THE MOST POWERFUL IN ITS CLASS!

The Poseidon Jet™ is the most powerful jet in its class! You can now control which jets operate inside of your Softub spa with the Trident Diverter™, allowing you to twist the Poseidon Jet™ face and control the flow of water.

HERE IS HOW IT WORKS!

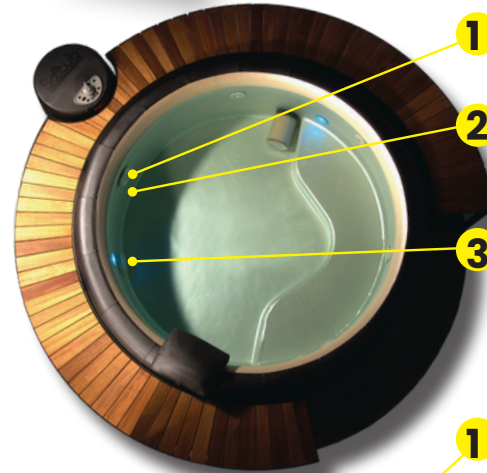
Activating your Trident Diverter™ is as simple as a few twists! Turn once and the right side jets of the spa are on, with the left side turned off... turn again and only the left sided jets are on, with the right side turned off. One more turn and you have diverted ALL the jet pressure to the Poseidon Jet™, creating a powerful, hydrotherapy stream that is great for a deep tissue massage. When not activated, enjoy the hydrojets for even hydrotherapy.

PORTICO'S HYDROTHERAPY!

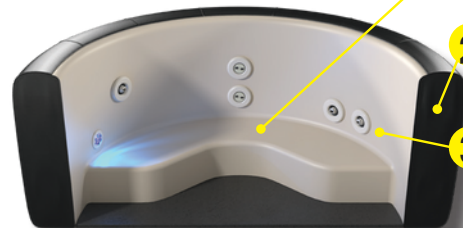
Our Therapy Station bench seat includes;

- Adjustable therapeutic jets to target individual hydrotherapy needs
- Dual stacked pulse flow spinning jets to relieve mid and lower back tension
- Dual horizontal adjustable lumbar massage jets

LOOK! INSIDE THE PORTICO™



- 1 Poseidon Jet™, the most powerful jet in its class!
- 2 Trident Diverter™, to control the flow of water exactly as you want it
- 3 Dual multi-colored LED lights with several programs for underwater lighting



- 1 3 therapy station bench seat, therapeutically positioned for spinal and lumbar massage
- 2 Reflectix®, provides additional insulation and radiant heat barrier
- 3 Total of 8 hydrotherapy jets

WHY SOFTUB® SPAS SHOULD BE YOUR CHOICE FOR HYDROTHERAPY

Softub spas are thoughtfully designed for true hydrotherapy, featuring strategically positioned jets and barrier-free seating that allow for unrestricted movement and comfort.

▶ CHRONIC PAIN CONDITIONS

A warm soak in a Softub spa can relieve pain and muscle joint stiffness. The buoyancy of water reduces 90% of body weight, while improving blood circulation, allowing the brain to naturally release endorphins into the blood stream creating a natural pain reliever. Hydrotherapy assists greatly in the dilation of blood vessels, which increases circulation that helps people with muscle or joint pain by delivering oxygen and enzymes to the pain sites.

▶ FIBROMYALGIA SYNDROME

Hydrotherapy appears to be particularly effective for those suffering from fibromyalgia syndrome by reducing muscle pain in the ligaments and tendons. According to a review published in Rheumatology International where candidates suffering from FMS underwent 20 minutes of hydrotherapy treatments once a week for 6 months, "there was strong evidence for the effectiveness of hydrotherapy in the management of fibromyalgia syndrome. Improvements were particularly in pain, health status and tender point count."

▶ ARTHRITIS

A warm soak in a Softub spa relieves the pain of muscle and joint stiffness, improves blood circulation and releases endorphins which is a natural pain reliever. Buoyancy of water reduces 90% of body weight, making it easy to move around comfortably.

▶ DIABETES

Exercising in your Softub spa allows unrestricted movement for water aerobics that greatly improves joint mobility as well as the positive effect of increasing blood circulation, naturally releasing endorphins into the blood stream that serves as a natural pain reliever. This can be especially helpful for diabetics who are unable to participate in traditional forms of exercise.

▶ SLEEP DISORDERS

Lack of sleep has been linked to numerous negative effects. Luckily enough the solution might be waiting in your own back yard! The National Sleep Foundation states that "soaking in hot water, such as a hot tub before retiring can ease the transition into a deeper sleep." Here is the science behind it: soaking in warm water before going to bed triggers your body's internal thermostat to lower your body temperature. A gradual reduction in body temperature induces drowsiness, leaving you more prepared for sleep.

▶ ANXIETY AND STRESS REDUCTION

Choose from the various levels of massage created by the adjustable jets that assist in loosening knots of tension and enhances the muscle's range of motion. Increased blood flow allows the brain to release endorphins into the blood stream, a natural form of pain relief for tension in the body.

We didn't invent hydrotherapy...we just made it better!

FACE THE FACTS

US

VS.

THEM

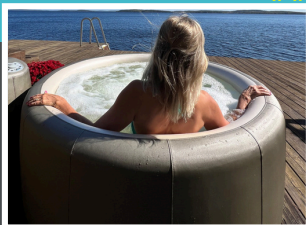
SITE PREP	Any adequate, load bearing smooth surface, outdoors or indoors. No additional costs in preparation.	Construction, excavation permits, or concrete pad necessary for installation. \$1200 + expense.
ELECTRICAL	Plugs into any dedicated 15 amp/115 volt outlet – no additional costs. Cord mounted Ground Fault Circuit Interrupter (GFCI) included.	Installation of extra amperage or 220V-60 amp line is needed. Additional GFCI purchase may be required. 50 amp can cost \$1200 or more.
INSTALLATION	Simple as 1, 2, 3 installation, and can be done by one person.	Costly crew, placement, plumbing, electrician costs, crane sometimes necessary.
PORTABILITY	Rolls through any standard doorway making it easy to be moved from location to location.	Typically requires professional installation at cost. Usually not practical due to weight and site preparation involved.
THERMAL LID	Insulated folding lid assists in heat retention and efficiency. Convenient combination locking straps to secure spa when not in use.	May be an optional item with an additional expense.
JET POWER	Strategically placed, interchangeable hydro-jets for even hydrotherapy.	Hydrotherapy often uneven due to number and configuration of jets. Must use caution with slippery surface, and hard corners.
SAFETY	Constructed from a Polybond™ foam, there are no hard, slippery surfaces and no hidden depths.	Dangerous, hidden depths.
SEATING	Spacious barrier-free seating allows for a variety of positions and unrestricted movement for hydrotherapy routines.	Moulded, hard plastic, “assigned” seats that restrict activity and positioning.
COMFORT	Padded surfaces to surround yourself in cushioned comfort.	Hard surfaces that are just plain uncomfortable.
ENERGY CONSUMPTION	You can maintain your Softub spa at your desired water temperature for about \$15-\$20 per month, year round.	Typically operate for \$50 or more per month.
SOFTUB SPAS® ECO-ADVANTAGE	We were green before it was cool! Softub spas far exceed stringent compliance requirements set forth by the California Energy Commission as well as National Standards. No harmful VOC's (Volatile Organic Compounds) are emitted during the manufacturing process and excess materials are recyclable.	Many spa manufacturing methods emit harmful, environmentally-damaging, VOC's (Volatile Organic Compounds). Many are constructed of materials that can't be recycled.

US Patent Numbers 4,858,254 • 4,843,659 • 4,981,543 • 5,585,025 • 5,092,951 • 5,133,818 • 5,283,915 • 5,392,473 • 6,066,253 • 6,444,129 • 6,875,961 • 6,800,205 • 8,973,176 Canada: 2,435,579 • 1,315,045 • Taiwan: 071790 • Hong Kong: 947 of 1995 • France/Germany/UK: 0396396 • Other US and International Patents Pending.

Softub Spas®, HydroMate®, Simple is Better®, and the Distinctive Product Configuration are registered trademarks of Softub Spas®, Inc. SmartChip™, LeatherTex™, SoftSparkle™, Polybond™, WeatherTex™, SynTex™, Step into Softness™, Resort™, Legend™, PowerPak™, Sportster™, and Portico™ are trademarks of Softub Spas®, Inc.

SPECIFICATIONS

Sportster® 140



Legend™ 220



Resort™ 300



Portico™



Seating Capacity	1-2	3-4	4-6	4-6
Outer Diameter	150cm (59")	180cm (71")	198cm (78")	201cm (79")
Inner Diameter	127cm (50")	152cm (60")	168cm (66")	168cm (66")
Height	61cm (24")	61cm (24")	69cm (27")	69cm (27")
Number of Jets	4	5	7	8
Water Capacity	530L (110gal)	833L (180gal)	1137L (260gal)	1052L (230gal)
Empty Weight	50 lbs	70 lbs	80 lbs	88 lbs
Filled Weight	1,445 lbs	2,120 lbs	2,870 lbs	2,700 lbs
Bi-Fold Lid	20 lbs	24 lbs	31 lbs	31 lbs
Hydromate	40 lbs	40 lbs	40 lbs	40 lbs

Exterior Colour Options

SynTex™



Graphite



Metallic
Blue



Taupe

LeatherTex™



Mocha

Berwick



Tweed



Sand

Interior Colour Options



Pearl



Blue

*limited exterior colours
available with a Blue interior.

For updated colour options go to
www.softubcanada.com.

Colours shown are not an exact
representation of color. Please
request color swatch for colour
accuracy.

SIMPLE HEATING TECHNOLOGY!

OVER 40 YEARS OF INNOVATION

THE HYDROMATE® SYSTEM

Our patented heat recovery system utilizes the waste heat generated from the pump motor to heat the spa to your desired temperature. We do this by circulating the spa water through stainless steel coils that are wrapped around the pump housing.

Patented SmartChip® power monitoring system, prevents the pump from turning on if voltage is too low which can cause damage to your pump. Additionally, the SmartChip® will also reset your Softub spa, and turn it back on once power levels return to normal.

What does this technology mean for you?

- No expensive, unreliable heater to fail!
- Unsurpassed longevity of your Softub spa pump motor, as it is a water-cooled system.
- Plugs into a standard, dedicated 15 amp/115 volt outlet.
- Plug and play spa that can operate both heat and jets simultaneously.
- Softub products are registered with the North American Energy Commission, and fall far below the maximum energy consumption allowance (based on stringent California laws).
- Your Softub spa will maintain your desired temperature in all outdoor climates year-round!



THE SOFTUB SUCCESS STORY

It all started with our Founder, Tom Thornbury, and a group of engineers in a garage over 40 years ago. After looking at the other hot tubs available, they created a cost-effective, durable, and comfortable spa that incorporated the best features possible.

The primary reasons for the great success of Softub worldwide is the truly unique, break-through product concept, and the devotion and diligence of hundreds of talented, dedicated employees, dealers, and distributors.

Softub has grown to be one of the most recognized brands in the industry. We continue to be a leader in innovation for portable hot tub design and hold numerous patents with our processes and components that are unmatched by any other.

It's a perfect time to join the hundreds of thousands of Softub owners already experiencing true relaxation.

Dealer Info



Softub Canada
Sudbury, Ontario
Canada

softubcanada.com

REV. 07/24